



# TruVision® Navigator

Unified Security Solution

## Overview

TruVision Navigator 9.0 provides users of TruVision recorders and cameras with an intuitive and feature-rich video management package. The product also integrates with IFS network equipment for a total management experience of the IP video system.

TruVision Navigator has a scalable architecture and can be installed as a standalone software or as a client/server system for multi-site applications.

## Use of TruVision Navigator & Scalability

TruVision Navigator is best suited for small or medium scaled as well as multi-site installations where you either actively manage a small amount of cameras with a small amount of operators, or when passively managing a larger amount of cameras with a small amount of operators.

TruVision Navigator can be deployed as a standalone system or as a client/host application, with clients that connect to the host database. The scalability ensures that users can easily expand and consolidate video surveillance systems without drastic changes to their existing security setup.

In case of solutions where large camera quantities are being actively managed or monitored by a large amount of users simultaneously, it is recommended to choose our Enterprise Video Solutions.



## Standard Features

### Intuitive Operator User Interface

- Logical view to customise the video device tree
- Up to 10 video tabs to create a customized video wall
- Custom views that allow user-specified groups of video streams and sequencing
- Place access control doors and intrusion sensors on maps and link to cameras for a fully integrated and centrally managed security solution
- Pop up the event monitor, with live video, when triggered by an alarm event
- Add video bookmarks and manage with bookmark manager
- Directly view live/playback video from TruVision IP cameras (with SD cards)
- Built-in TruVision 360° camera de-warping
- Optional USB keypad/joystick.

### Easy System Installation and Maintenance

- Logical view to customise the video device tree
- Remote focus/zoom control functions
- Discover TruVision video devices, UltraSync panels and IFS switches on the network
- Built-in Device Manager provides easy way to activate, set-up and maintain TruVision devices on a network
- View camera names on IFS switch ports, view switch bandwidth usage and remotely cycle PoE on each port
- Remote device configuration and client software distribution.

### System Administration Management

- License free software with scalable architecture, from standalone to multi-site host/client applications
- Standalone and client/server architecture that supports server offline mode
- Defined groups and user permissions
- Automatic health diagnostic service to maintain system uptime
- Audit trails and report exporting
- Built-in device diagnostics and reporting
- The ability to automatically pause video streams that are not being viewed.

## Refreshed User Interface & Enhanced Functionalities

The user interface of TruVision Navigator has been refreshed for a better user experience. Besides all the great features that TruVision Navigator already had, some interesting new features were added to version 9.0:

### Multiple timelines

- Searching has become simpler: you can now visualise the recordings.

### Thumbnails and thumbnail search

- Searching for the right moment is taking too much time? Again, we make it easier for you. Now just by hovering your mouse over the timeline, you'll be able to see thumbnails to reveal the incident you were looking for.

### Have your bookmarks saved in the database

- Live or recorded video, you will always be able to retrieve the moments that were bookmarked, even in a later session.

## Service Pack 2 for Version 9.0

This new update aims at improving the overall experience with Carrier video security solutions. Here are the new features and enhancements included in the SP 2:

- Support for the TruVision People Counting camera (TVS-PC1)
- With SP2, you can show the real-time people counting result for your site
- The software receives the real-time counting data of each camera on site, calculates the occupancy and can show it in various ways to guards, staff and visitors
- The real-time occupancy can be displayed in a video tile, on a map, on a webpage, or even on a mobile device (iOS or Android) in the same LAN network.

The software offers multiple other possibilities, including customising the display and configuring the counting parameters. An alarm can be triggered when the defined number of people has been reached. This alarm can create an action such as door control, access control, traffic light control and public address system control to announce a pre-recorded message. Staff and guards can also receive an email to take the necessary actions when the maximum occupancy has been reached.

The people counting cameras and TruVision Navigator 9.0 SP2 form our TruVision People Counting Solution for many applications, such as social distancing, resource management and emergency situations. Please check out our marketing brochure about the people counting solution for more detailed information.

### Discovery tool enhancement

- The Discovery Tool is now able to show the IP cameras that are already added to a recorder, so that the cameras are shown again in the Discovery Tool and can be added as devices when needed.

## Details

- License free software with scalable architecture, from standalone to multi-site host/client applications
- 64-bit video management software with GPU support (optional)
- Live view and playback of TruVision devices (see list for supported models)
- Dedicated event monitor for live display of camera events and alarms
- Dedicated playback viewer for a better organization of live and playback video (Service Pack 1; optional)
- Graphical maps that allow interactive camera control and output control
- Support for multiple timelines, thumbnails and thumbnail search for easier incident retrieval
- Embedded Device Manager tool for managing devices including auto discovery of devices, firmware upgrade tool, new system wizard and storage calculator.
- Event filtering and Notifier scheduler to see only relevant events
- Remote device configuration and client software distribution
- Extensive health diagnostics reports & network statistics per device with online/offline detection for TruVision devices
- Extensive user management for efficient and secure administration
- Audit history reports.

## Operator-Friendly User Interface

TruVision® Navigator brings together TruVision video, UltraSync® intrusion and IFS® network switches into one complete interface

### Device Tree

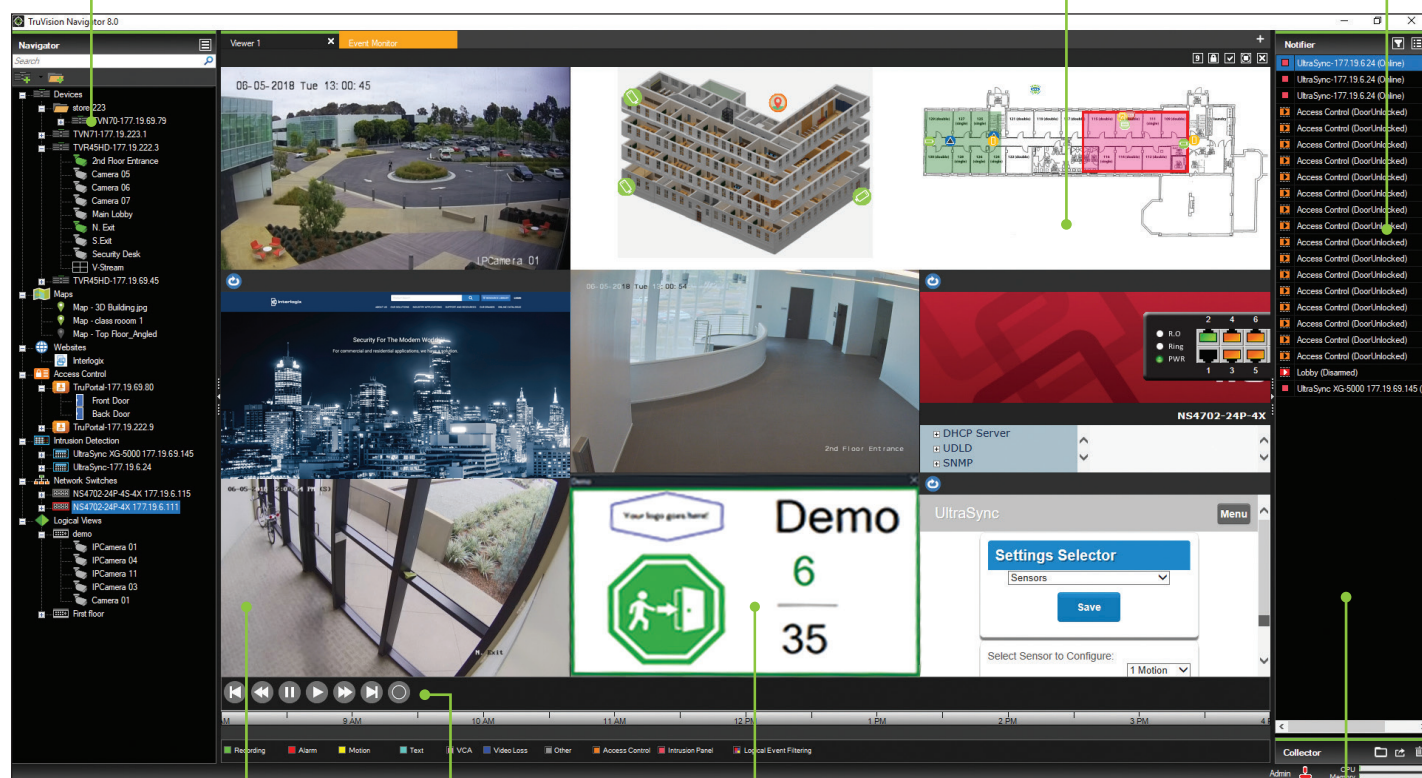
Provides quick access to TruVision video cameras and recorders, UltraSync intrusion and IFS network switches.

### Facility/Campus Maps

Import facility/campus maps and place cameras, access control doors, and intrusion sensors on maps. Easily embed maps within maps.

### Notifier

Provides real-time, color-coded video event notification of UltraSync alarm events.



### Viewer

View live and recorded video with up to 10 detachable video viewing tabs allows you to create a virtual video wall. The pop-up event monitor window provides live video during an alarm. Users can easily setup individual video viewing tiles for sequencing of multiple cameras for easy monitoring.

### Video Playback Controls

Easily play, pause, rewind and bookmark video recordings with controls and timeline.

### People Counting Camera

Provides public safety and comfort by counting the number of people who pass through entrance and exit.

### Collector

Acts as a holding repository for video segments, snapshots and local recordings ready for export.

Built-in Device Manager

Device Discovery

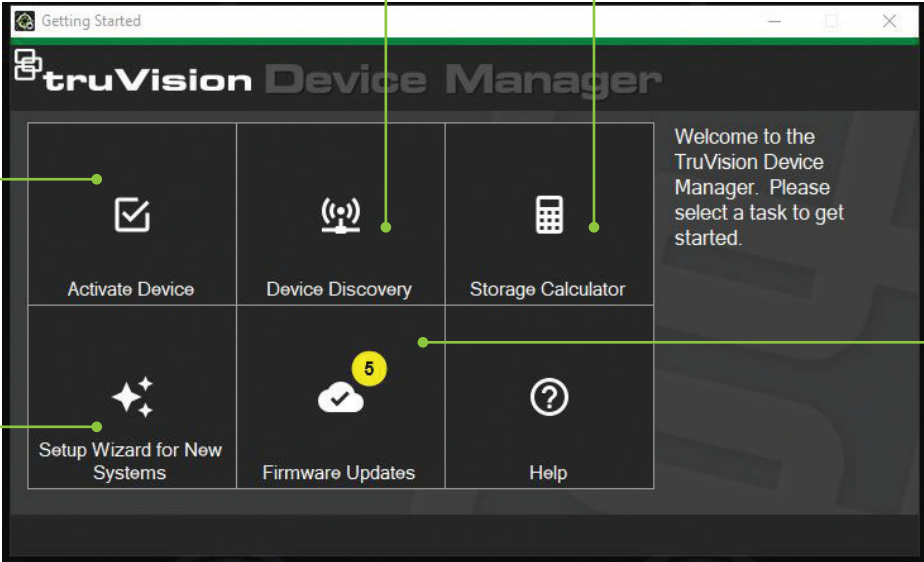
Device Manager searches for online devices within the local network and displays network information for each device.

Storage Calculator

Launch the TruVision recorder storage calculator right within TruVision Navigator.

Activate Devices

Use this tool to discover and activate new TruVision® devices and assign a unique password for added security.



Firmware Update

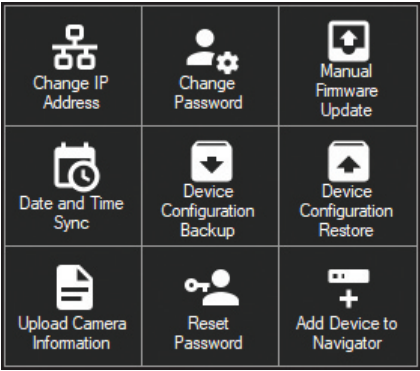
Use the Firmware Update window to automatically check if your devices are up-to-date. Upgrade the firmware of one device or multiple devices on a network.

New System Setup Wizard

Use the new System Setup Wizard to set up a first-time installed video system.

Device Manager Tools

Click on the Device Manager Tools button in the Device Manager window to access more useful tools.



Device Manager Capabilities

The following Device Manager features are compatible with the following Aritech devices.

Device Type	Device Discovery	Change IP Address	Change Password	Firmware Upgrade	Change Date & Time	Device Config Backup & Restore	Upload IP Camera Information	Reset Password
Recorders	YES	YES	YES	YES	YES	YES	YES	YES
Cameras	YES	YES	YES	YES	YES	YES	N/A	YES
Encoders/Decoders	YES	YES	YES	YES	YES	YES	N/A	YES
IFS® Switches	YES	YES	NO	NO	NO	NO	N/A	NO
UltraSync® Panels	YES	NO	NO	NO	NO	NO	N/A	NO

# TruVision® Navigator

National Sales Enquiries  
10 Ferntree Place  
Notting Hill, Victoria 3168  
Phone: 1300 361 479  
Outside Australia: +61 3 9239 1200  
www.interlogix.com.au

## Software requirements

The following operating systems and other software components are prerequisites for client and server installation:

Note: 32-bit operating systems are not compatible with TruVision Navigator 8.0.

### Standalone Client or Client/Server Software Requirements

Component	Version	Notes
Operating System	Microsoft® Windows 7 SP1 64-bit	
	Microsoft Windows 8.1 64-bit	WinPCAP needs to be installed separately and run in compatibility mode for operation on Windows 8 systems
	Microsoft Windows 10 64-bit	
	Microsoft Windows Server 2012 R2 64-bit	
	Microsoft Windows Server 2016	
Other	Microsoft .NET Framework 4.0	Packaged with the installation
	WinPCAP 4.1.3	Packaged with the installation
Database (For Server Only)	Microsoft's SQL 2008	Microsoft's SQL Express 2008 R2 is packaged with the installation.
	Microsoft's SQL 2008 R2	Microsoft SQL is not required for Standalone installation.

## Server/client hardware guidelines

The following specifications are only meant to serve as a guideline as TruVision Navigator system performance varies according to the robustness of the machine.

### Server hardware specifications

Component	Recommended	Notes
Processor	3rd Gen Intel Core i5-3470 Processor (6MB, 3.2GHz) w/HD2500 Graphics	CPU power is directly related to the performance of the application when running and rendering video. The better the CPU, the more responsive the application will be.
Memory	16GB RAM	RAM is related to the number of different applications that can run simultaneously as well as the number of different operations that TruVision Navigator can perform at once. The higher the RAM, the better the performance of the application.
Hard Drive	500GB - 7200RPM, SATA 3.0Gb/s, 16MB Cache	Optional - TruVision Navigator requires approximately 700MB to install. To store exported video from the devices on the machine, an increased storage size may be required.
Graphics Card	Nvidia® GeForce GTX 1060	Video Card capability is directly related to the video rendering performance within TruVision Navigator. The better the video card, the better the video rendering performance.
Resolution	1920 x 1080	
Network	Integrated PCIE 10/100/1000	The network interface card can be a performance bottleneck, depending upon the throughput of the card. If the card's throughput is less than the amount of data streaming to the machine, performance issues may occur.

## Supported Recording Devices

All IP camera series and encoders: TVA, TVB, TVC, TVD, TVE, TVF, TVS, TVW, UP series

### DVRs and HD-Hybrid Recorders

TruVision DVR 10
TruVision DVR 11
TruVision DVR 12
TruVision DVR 41
TruVision DVR 42
TruVision DVR 60
TruVision DVR 12HD
TruVision DVR 15HD
TruVision DVR 44HD
TruVision DVR 45HD
TruVision DVR 46

### Network Video Recorders

TruVision NVR 10
TruVision NVR 11
TruVision NVR 20
TruVision NVR 21
TruVision NVR 21S
TruVision NVR 21 Plus
TruVision NVR 50
TruVision NVR 22
TruVision NVR 22S
TruVision NVR 22 Plus
TruVision NVR 70
TruVision NVR 71